



Patient Access

Enhanced Visibility without Compromise with Ultraline 360

Improved results in Regional Anesthesia with Ultraline 360 needles

Overcome Challenges

In nerve block application with Ultraline 360



Adequate pain management along with anesthesia is crucial for medical and surgical procedures as well as during the post-operative phase. In order to effectively manage pain while reducing opioid consumption including their associated side effects, multimodal pain management strategies have become an important part of the peri-operative care process. These have and will increasingly replace general anesthetic and analgesic approaches in favor of combinations of regional and local methods such as neuraxial anesthesia (spinal/epidural approach), regional nerve blocks or direct wound infiltration.

During recent years it has become evident that the use of peripheral nerve blocks and other regional anesthesia techniques considerably improves patient outcomes.

In addition to the benefits they bring, peripheral nerve blocks also impose certain challenges anesthesiologists are facing when applying this method. One of the main challenges is to properly identify the targeted nerve and to safely approach it in order to deliver the anesthetic. This challenge is particularly present when performing deep nerve blocks and for patients with difficult anatomy. In order to prevent risk of potential nerve damage, it is very important to identify position of needle tip in relation to nerve structures.

Ultrasound is revolutionizing the way peripheral nerve blocks are performed today and is enabling anesthetists to visualize both needle and the anatomic structures they are approaching. This means easier performance of nerve blocks and increased speed of mastering this method.

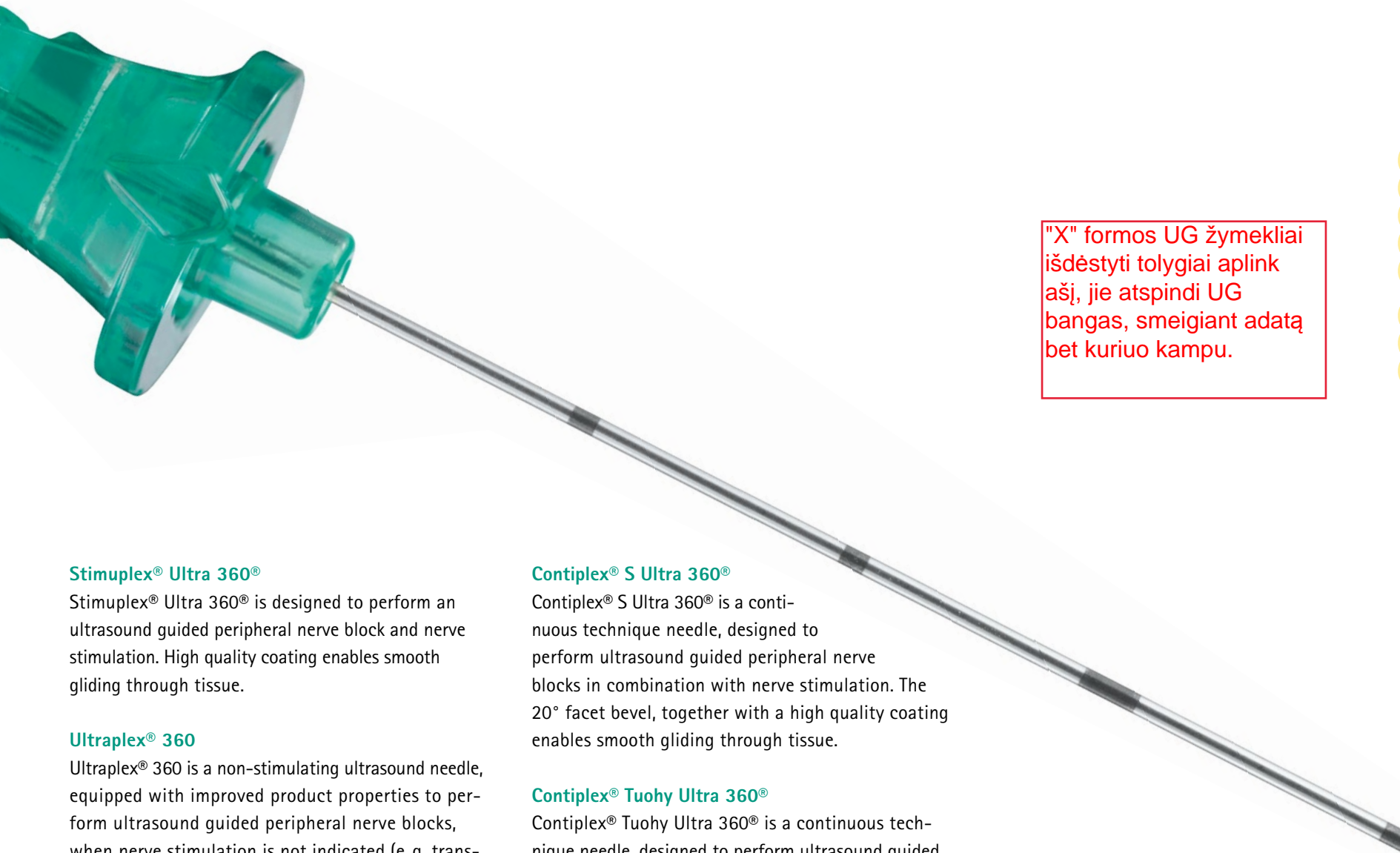
Quality of needle tip visualization depends on various factors, such as ultrasound machine, patient anatomy and also a lot on the physical properties of the needle. Our new generation of echogenic needles possesses properties that ease needle visualizing and contribute to patient safety.



In our new Ultraline 360 we invested all our knowledge and years of our experience, creating a needle with improved echogenic visibility without compromise. Ultraline 360 provides enhanced visibility under ultrasound with few artefacts, while maintaining the well-recognized puncture and gliding characteristics.

The neXt Generation for Ultrasound Conditions

Ultraline 360 range of needles for nerve block challenges



Ultragarsiniai žymekliai yra išdėstyti trimis segmentais (trumpas, trumpas, ilgas) aplink adatos ašį distalinėje adatos dalyje, ne mažesnėje nei 20 mm ilgio atkarpoje;

"X" formos UG žymekliai išdėstyti tolygiai aplink ašį, jie atspindi UG bangas, smeigiant adatą bet kuriuo kampu.

Stimuplex® Ultra 360®

Stimuplex® Ultra 360® is designed to perform an ultrasound guided peripheral nerve block and nerve stimulation. High quality coating enables smooth gliding through tissue.

Ultraplex® 360

Ultraplex® 360 is a non-stimulating ultrasound needle, equipped with improved product properties to perform ultrasound guided peripheral nerve blocks, when nerve stimulation is not indicated (e.g. transversus abdominalplane block). A high quality treated surface enables smooth gliding, when advancing through tissue.

Additional characteristics

- Due to high visibility of the X-pattern, the needles are easy to visualize with few artefacts
- 30° bevel for safe approach to nerve
- 50 cm long DEHP-free injection tubing
- Available in 35-150 mm and in G20/G22

Contiplex® S Ultra 360®

Contiplex® S Ultra 360® is a continuous technique needle, designed to perform ultrasound guided peripheral nerve blocks in combination with nerve stimulation. The 20° facet bevel, together with a high quality coating enables smooth gliding through tissue.

Contiplex® Tuohy Ultra 360®

Contiplex® Tuohy Ultra 360® is a continuous technique needle, designed to perform ultrasound guided peripheral nerve blocks in combination with nerve stimulation. The needle is equiped with Tuohy bevel for safe approach to nerve. High quality coating enables smooth gliding through tissue.

Additional characteristics

- Due to high visibility of the X-pattern, both needles are easy to visualize with few artefacts

Adatos smaigalio nuopjova 30*, stiebas padengtas izoliacine medžiaga

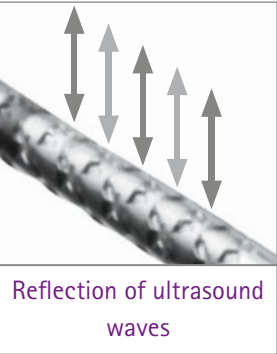
YOUR BENEFITS

- Highly visible echogenic X-pattern facilitates clear needle visualization
- Safety code enables easier identification of the needle and needle tip position
- Stimuplex® 30° and Tuohy bevel combined with smooth surfaces for good puncture and gliding behavior
- 360 degree X-pattern reflectors ensuring visibility from all sides

X-pattern: Enhanced visibility

The new Ultraline 360 needles are designed with a distinctive safety X-pattern with a increased number of reflective angles that enable high reflection of ultrasound waves, ensuring good visibility of the needle under ultrasound.

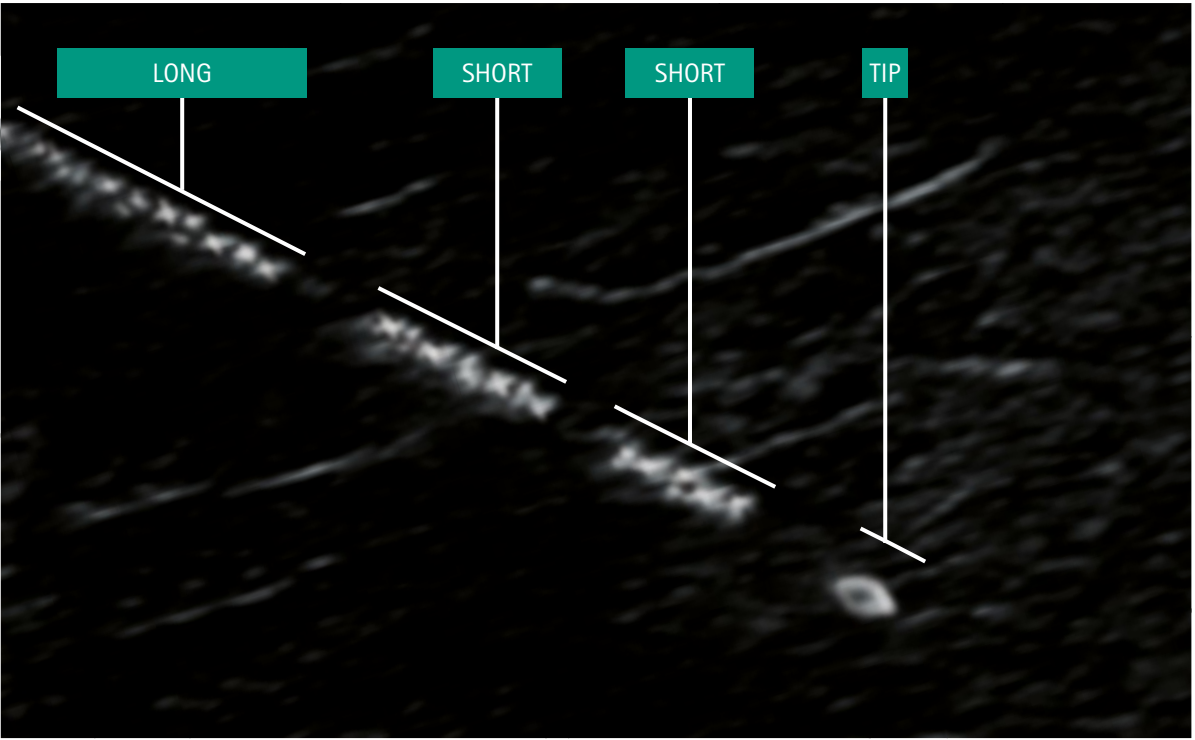
Due to its unique design, the X-pattern reflects ultrasound beams back to the probe even at steeper penetration angles, creating the best results for the user.



Safety Code


The B. Braun Ultraline 360 product features the safety code designed to help locate needle tip in challenging nerve block conditions. The X-pattern is strategically applied on the first 20 mm of the needle shaft to create the three segmented code "short-short-long". This enables distinction between the needle tip and the upper needle shaft.*


Through enhanced visibility and its important safety aspect you can master daily challenges in ultrasound usage easily.





*Please note that the visualization of the safety code may depend on a number of factors such as proper setting of the ultrasound unit, patient related conditions of the tissue, artefacts and proper alignment of the US probe and the needle.

Product Specifications

Stimuplex® Ultra 360®	Description	Product specifications		Sales unit/Pcs.	Article codes *			
		ø (G) and Length (inch)	ø and Length (mm)					
	<ul style="list-style-type: none">For single shot nerve blocks performed under ultrasound and nerve stimulationHigh quality low friction coating30° Stimuplex® bevel	22 G x 1 3⁄8"	0.70 x 35	25	4892503	-01	-03	-04 -20
		22 G x 2"	0.70 x 50		4892505	-01	-03	-04 -20
		22 G x 3 1⁄8"	0.70 x 80		4892508	-01	-03	-04 -20
		20 G x 4"	0.90 x 100		4892510	-01	-03	-04 -20
		20 G x 6"	0.90 x 150		4892515	-01	-03	-04 -20

Ultraplex® 360	Description	Product specifications		Sales unit/Pcs.	Article codes *			
		ø (G) and Length (inch)	ø and Length (mm)					
	<ul style="list-style-type: none">For single shot nerve blocks performed with ultrasound onlyHigh quality low friction surface30° Stimuplex® bevel	22 G x 1 3⁄8"	0.70 x 35	25	4892603	-01	-03	-04 -20
		22 G x 2"	0.70 x 50		4892605	-01	-03	-04 -20
		22 G x 3 1⁄8"	0.70 x 80		4892608	-01	-03	-04 -20
		20 G x 4"	0.90 x 100		4892610	-01	-03	-04 -20
		20 G x 6"	0.90 x 150		4892615	-01	-03	-04 -20

Contiplex® S Ultra 360®	Description	Product specifications		Sales unit/Pcs.	Article codes *
		ø (G) and Length (inch)	ø and Length (mm)		
	<ul style="list-style-type: none">For continuous technique nerve blocks performed under ultrasound and nerve stimulation20° facet bevelCatheter through-the-needle systemHigh quality low friction coating	Contiplex® Ultra Catheter 0.45 x 0.85 x 400 mm		10	4898650-27
		18 G x 2"	1.3 x 50		
		Contiplex® Ultra Catheter 0.45 x 0.85 x 1000 mm		10	4898610-27
		18 G x 4"	1.3 x 100		
		18 G x 6"	1.3 x 150		

Contiplex® Tuohy Ultra 360®	Description	Product specifications		Sales unit/Pcs.	Article codes *
		ø (G) and Length (inch)	ø and Length (mm)		
	<ul style="list-style-type: none">For continuous technique nerve blocks performed under ultrasound and nerve stimulationTuohy bevelCatheter through-the-needle systemHigh quality low friction coating	Contiplex® Ultra Catheter 0.45 x 0.85 x 400 mm		10	4898704-01 4898704-27 4898705-01 4898705-27
		18 G x 1 1⁄2"	1.3 x 40		
		18 G x 2"	1.3 x 50		
		Contiplex® Ultra Catheter 0.45 x 0.85 x 1000 mm		10	4898710-01 4898710-27 4898715-01 4898715-27
		18 G x 4"	1.3 x 100		
		18 G x 6"	1.3 x 150		

* Suffixes	Respective Region
Stimuplex® Ultra 360® & Ultraplex® 360	
Article code suffix -01	CE Region: Covering all CE countries
Article code suffix -03	Asia
Article code suffix -04	South America
Article code suffix -20	CIS
Contiplex® Tuohy Ultra 360®	
Article code suffix -01	CE Region: Covering all CE countries
Article code suffix -27	RoW
Contiplex® S Ultra 360®	
Article code suffix -27	All the countries

B. Braun Melsungen AG | Hospital Care | 34209 Melsungen | Germany
Tel. +49 5661 71-0 | www.bbraun.com